

# ANGUS BEEF

with Carrot, Green Beans, Cauliflower, Tomato & Courgette

ADULT WORKING DOG | OUR ENTIRE WORKING DOG FOOD RANGE IS UK VAT FREE

VAT  
FREE

65%

TOTAL

### 65% TOTAL BEEF

Rich in essential amino acids, vitamins & minerals to support every day health and well-being.

35%

MINIMUM

### MINIMUM 35% FRESHLY PREPARED

Angus Beef



### DIGESTIVE HEALTH

Added pre-biotics MOS & FOS help aid digestive health



### JOINT SUPPORT

Naturally occurring collagen helps maintain healthy joints and skin.

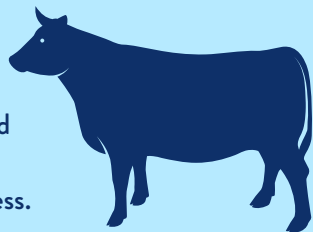


### SUPERFOOD BLEND

A blend of 5 carefully selected superfoods each with their own benefits.

## ANGUS BEEF

Angus cattle are known for their significant muscle content and classed as higher quality produce compared to regular beef due to increased marbling (amount of intramuscular fat). Good marbling means fat is dispersed thinly and evenly throughout the meat, ensuring consistent texture, juiciness and flavour. Angus beef is also lower in saturated fat, rich in amino acids, vitamins and minerals and shrinks less during the cooking process.



## SUPERFOODS



**CARROT:** Source of Vitamin A to help maintain healthy vision.



**TOMATO:** Source of dietary fibre to help normalise the gastrointestinal transit time.



**GREEN BEANS:** Source of Iron to help support normal functions of the circulatory system.



**COURGETTE:** Source of Vitamin B3 an important cofactor in carbohydrate, protein and fat metabolism.

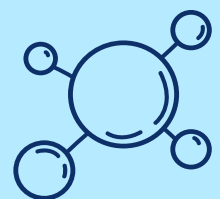


**CAULIFLOWER:** Source of Vitamin B9 which is important for amino acid and nucleotide metabolism.

## NATURALLY OCCURRING COLLAGEN

Your 35% Minimum Freshly Prepared Angus Beef has naturally occurring Collagen.

- ✔ Naturally occurring collagen is found in freshly prepared ingredients
- ✔ Provides important building blocks for the body
- ✔ Helps maintain healthy bones, joints and skin

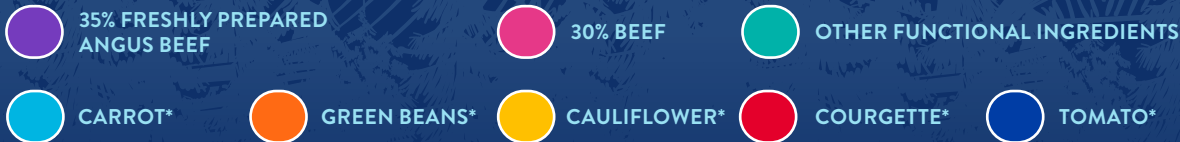


## ADVISORY



In line with HMRC guidance, at GA we market and label working dog products differently to our pet product offering. This distinction ensures that Working Dog products are marketed separately from pet products, helping to maintain compliance and avoid market overlap.

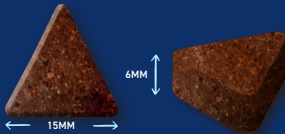
## COMPOSITION



65% Beef (Freshly Prepared Angus Beef (35%), Dried Beef (25%), Beef Fat (5%)), Sweet Potato, Beans, Beet Pulp, Dried Superfood Blend\* (Including Carrot, Green Beans, Cauliflower, Tomato, Courgette), Omega 3 Supplement, Minerals, Joint Pack (Glucosamine 178 mg/kg, Methylsulfonylmethane 178 mg/kg, Chondroitin Sulphate 125 mg/kg), Fructooligosaccharides (175 mg/kg), Mannanligosaccharides (50 mg/kg), Olive Extract (0.01%)

\*Each equivalent to 4% Fresh Ingredients

## KIBBLE SIZE



Our adult dog kibble has been optimised and designed to suit all mouths. Product shown at actual size. Each kibble has a tolerance of +/- 1mm.

## ANALYTICAL CONSTITUENTS

Crude Protein	38%	Metabolisable Energy	382 kcal/100g
Crude Fat	16%	Omega 6 Fatty Acids	1.2%
Crude Fibre	4%	Omega 3 Fatty Acids	0.7%
Crude Ash	6.5%	Calcium	1.1%
Moisture	8%	Phosphorus	0.9%
NFE	27.5%	Collagen	14%

## NUTRITIONAL ADDITIVES (PER KG)

### VITAMINS:

Vitamin A 14,423 IU, Vitamin D3 2,000 IU, Vitamin E 96 IU

### TRACE ELEMENTS:

Zinc (Zinc Sulphate Monohydrate) 153 mg,  
Iron (Iron (II) Sulphate Monohydrate) 48 mg, Manganese (Manganous Sulphate Monohydrate) 34 mg,  
Copper (Copper (II) Sulphate Pentahydrate) 14 mg,  
Iodine (Calcium Iodate Anhydrous & Potassium Iodide) 1.7 mg,  
Selenium (Sodium Selenite) 0.38 mg

## FEEDING GUIDE

WEIGHT OF DOG (kg)	GRAMS PER DAY (g)	WEIGHT OF DOG (kg)	GRAMS PER DAY (g)
1-5 Kg	30 - 105g	20-30 Kg	295 - 400g
5-10 Kg	105 - 175g	30-40 Kg	400 - 495g
10-20 Kg	175 - 295g	40 Kg +	495g+

\* All dogs are different and the guidelines should be adapted to take into account breed, age, temperament and activity level of the individual dog. When changing foods please introduce gradually over a period of two weeks. Always ensure fresh, clean water is available.

## BAG TYPE & SIZE

Your Superfood 65 recipe has up to 18 month shelf life.  
Available in 15kg Brown Paper Bag.  
Bag images shown for illustrative purposes only.



Important: The information provided in this document is GA Pet Food Partners Ltd interpretation of Regulation No 767/2009 including amending Regulations 2017/2279 and 2018/1903.

As with all legislation only courts can decide on the correct interpretation of the law. We would advise that you always seek legal advice when creating/printing new packaging, leaflets

or websites. The statutory Analytical Constituents declaration parameters (i.e. Crude Protein, Crude Fat, Crude Fibre, Crude Ash) may be used for declaration purposes along with Moisture. Other parameters are intended as a guide and in order to declare extra figures we suggest that analysis work is carried out to confirm levels more precisely.

Formulation updates: As information becomes available and in order to continually meet statutory analytical constituent declarations, formulations may have to be adapted to account for raw material variation and availability. There may also be other reasons outside of our immediate control (including but not limited to force majeure events) which warrant the change of a formulation to improve its suitability.