

SFL
WORKING
DOG



BRITISH GRASS-FED LAMB

with Mint, Pomegranate, Mulberry, Broccoli & Fennel

ADULT WORKING DOG | OUR ENTIRE WORKING DOG FOOD RANGE IS UK VAT FREE

VAT
FREE

65%

TOTAL

65% TOTAL LAMB

Rich in essential amino acids, vitamins & minerals to support every day health and well-being.

35%

MINIMUM

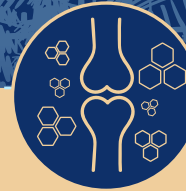
MINIMUM 35% FRESHLY PREPARED

British Grass Fed Lamb



DIGESTIVE HEALTH

Added pre-biotics MOS & FOS help aid digestive health



JOINT SUPPORT

Naturally occurring collagen helps maintain healthy joints and skin.



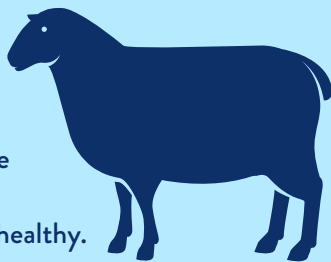
SUPERFOOD BLEND

A blend of 5 carefully selected superfoods each with their own benefits.

BRITISH GRASS-FED LAMB

It has been found that grass-fed lambs are leaner (have less body fat) and that the concentration of omega-3 fatty acids within the meat is increased, resulting in an increased ratio of omega-3 to omega-6 fatty acids. Lamb is a nutrient-dense, highly digestible protein source.

It is also a good source of vitamin B12 and iron which are required to help keep nerve and blood cells healthy.



SUPERFOODS



MINT: Source of Potassium to help with nerve and muscle functions.



BROCCOLI: Source of dietary fibre to help normalise the gastrointestinal transit time.



POMEGRANATE: Source of Vitamin C which has an essential role in collagen synthesis important to help maintain healthy bones.



FENNEL: A good source of Calcium which helps maintain healthy bones and teeth.

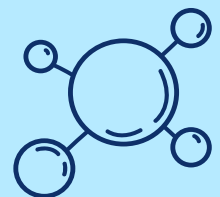


MULBERRY: Source of Iron to help support normal functions of the circulatory system.

NATURALLY OCCURRING COLLAGEN

Your 35% Minimum Freshly Prepared British Grass-Fed Lamb has naturally occurring Collagen.

- ✔ Naturally occurring collagen is found in freshly prepared ingredients
- ✔ Provides important building blocks for the body
- ✔ Helps maintain healthy bones, joints and skin

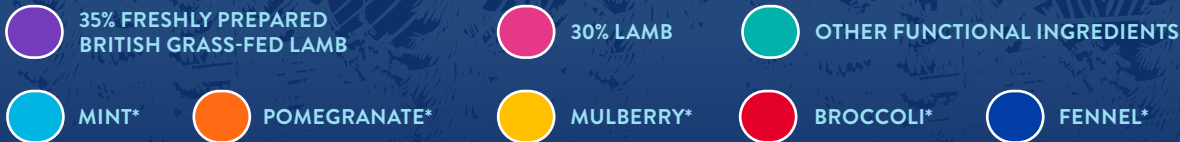


ADVISORY



In line with HMRC guidance, at GA we market and label working dog products differently to our pet product offering. This distinction ensures that Working Dog products are marketed separately from pet products, helping to maintain compliance and avoid market overlap.

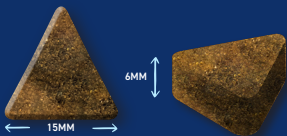
COMPOSITION



65% Lamb (Freshly Prepared Lamb (35%), Dried Lamb (22%), Lamb Fat (5%), Lamb Gravy (3%)), Sweet Potato, Beans, Beet Pulp, Dried Superfood Blend* (Including Mint, Pomegranate, Mulberry, Broccoli, Fennel), Omega 3 Supplement, Minerals, Fructooligosaccharides (175 mg/kg), Mannanooligosaccharides (50 mg/kg), Olive Extract (0.01%)

*Each equivalent to 4% Fresh Ingredients

KIBBLE SIZE



Our adult dog kibble has been optimised and designed to suit all mouths. Product shown at actual size. Each kibble has a tolerance of +/- 1mm.

ANALYTICAL CONSTITUENTS

Crude Protein	27.5%	Metabolisable Energy	361 kcal/100g
Crude Fat	15.5%	Omega 6 Fatty Acids	1.9%
Crude Fibre	3.5%	Omega 3 Fatty Acids	0.8%
Crude Ash	12%	Calcium	2.4%
Moisture	8%	Phosphorus	1.5%
NFE	33.5%	Collagen	7%

NUTRITIONAL ADDITIVES (PER KG)

VITAMINS:

Vitamin A 14,423 IU, Vitamin D3 2,000 IU, Vitamin E 96 IU;

TRACE ELEMENTS:

Zinc (Zinc Sulphate Monohydrate) 48 mg, Iron (Iron (II) Sulphate Monohydrate) 48 mg, Manganese (Manganous Sulphate Monohydrate) 34 mg, Iodine (Calcium Iodate Anhydrous) 0.96 mg, Selenium (Sodium Selenite) 0.19 mg

FEEDING GUIDE

WEIGHT OF DOG (kg)	GRAMS PER DAY (g)	WEIGHT OF DOG (kg)	GRAMS PER DAY (g)
1-5 Kg	35 - 110g	20-30 Kg	310 - 425g
5-10 Kg	110 - 185g	30-40 Kg	425 - 525g
10-20 Kg	185 - 310g	40 Kg +	525g+

* All dogs are different and the guidelines should be adapted to take into account breed, age, temperament and activity level of the individual dog. When changing foods please introduce gradually over a period of two weeks. Always ensure fresh, clean water is available.

BAG TYPE & SIZE

Your Superfood 65 recipe has up to 18 month shelf life. Available in 15kg Brown Paper Bag. Bag images shown for illustrative purposes only.



Important: The information provided in this document is GA Pet Food Partners Ltd interpretation of Regulation No 767/2009 including amending Regulations 2017/2279 and 2018/1903.

As with all legislation only courts can decide on the correct interpretation of the law. We would advise that you always seek legal advice when creating/printing new packaging, leaflets

or websites. The statutory Analytical Constituents declaration parameters (i.e. Crude Protein, Crude Fat, Crude Fibre, Crude Ash) may be used for declaration purposes along with Moisture. Other parameters are intended as a guide and in order to declare extra figures we suggest that analysis work is carried out to confirm levels more precisely.

Formulation updates: As information becomes available and in order to continually meet statutory analytical constituent declarations, formulations may have to be adapted to account for raw material variation and availability. There may also be other reasons outside of our immediate control (including but not limited to force majeure events) which warrant the change of a formulation to improve its suitability.